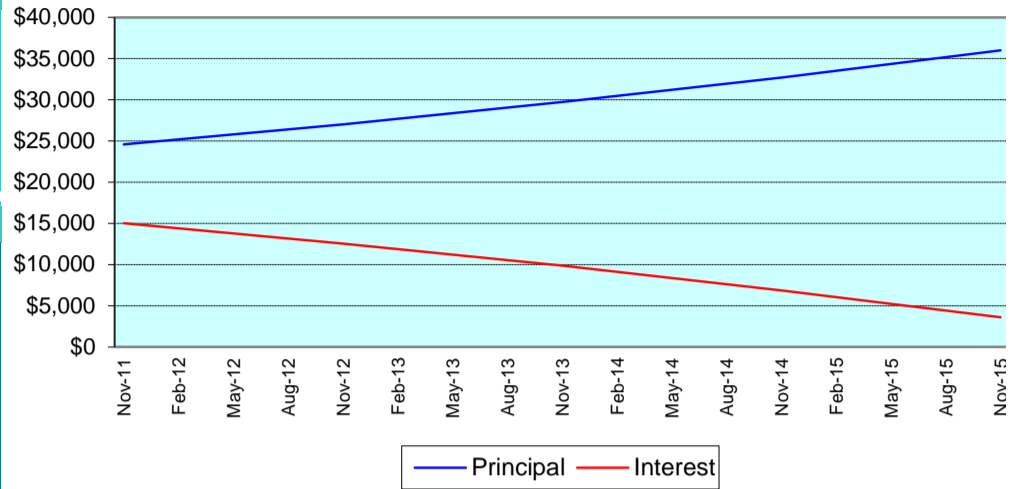


Loan Calculator

Printer friendly Spreadsheet for creating a loan amortization schedule
Excel Template by Excely.com

Loan Data	
Loan Amount	£150,000.00
Annual Interest Rate	10.00%
Loan Period in Years	5
Number of Payments Per Year	1
Start Date	25-Nov-2010

Summary	
Payment (per period)	£39,569.63
Number of Payments	£5.00
Actual Number of Payments	£5.00
Total Interest Paid	£47,848.11
Total Interest	31.90%
Total Extra Payments	£0.00
Total Payment	£197,848.11



Payment No.	Payment Date	Payment	Principal	Interest	Extra Payments	Balance
						£150,000.00
1	25-Nov-2011	£39,569.63	£24,569.63	£15,000.00		£125,430.37
2	25-Nov-2012	£39,569.63	£27,026.59	£12,543.04		£98,403.78
3	25-Nov-2013	£39,569.63	£29,729.25	£9,840.38		£68,674.53
4	25-Nov-2014	£39,569.63	£32,702.18	£6,867.45		£35,972.35
5	25-Nov-2015	£39,569.59	£35,972.35	£3,597.24		£0.00